

# PHOBOS

Panic scream detector

## WIRING INSTRUCTIONS

**Power voltage: from 12 to 24 Vcc**  
*Connection direction is important!* (see Fig. 2).

The position of the alarm contact activation mode jumper corresponds to Normally Closed (NC) operation mode. Move the jumper to operate in Normally Open (NO) mode.

Make sure that the tamper bump on the top cover faces the tamper switch when the casing is closed.

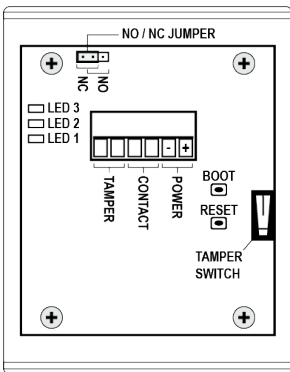


Fig. 2 : Circuit board

## LED OPERATIONS

When the detector is powered on:

LED L1 (red) is always on.  
LED L2 (yellow) flashes every second: this means that the detector is operational. It flashes faster when one is connected to the detector's Wi-Fi network.  
LED L3 (yellow) lights up for 20s at start-up and then goes out when the detector is operational. In the event of an alarm, it lights up for the duration of the lock activation time (see CONFIGURATION SITE), then goes out.

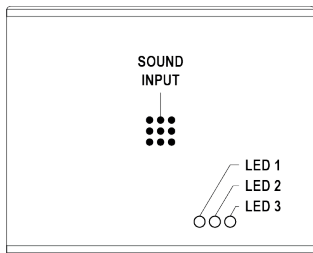


Fig. 3 : LED positions

## PLACEMENT OF THE PHOBOS

Install the PHOBOS close to accesses which can be blocked (emergency exits, elevators, ...), between 2m30 and 3m above the ground. If the ceiling is higher, a suspension must be provided to lower the detector to about 2.5m.

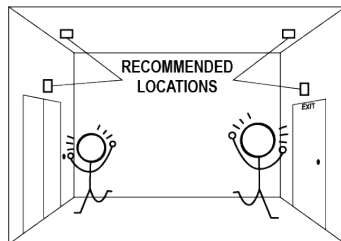


Fig. 4 : Placement of the PHOBOS

## CONNECTION TO DETECTOR

The detector is configured on an embedded website.

Connect to the Sensivic network:

**SSID : Sensivic-XXXX**  
(XXXX : serial number)

**Password : Qjafccnuas**

In a web browser page, type the IP address of the detector:

**192.168.1.10**

To indicate that you are connected to the detector's network, the detector's central LED flashes faster.

## NOTE

On smartphones, it is sometimes necessary to disable mobile data to get access to the configuration site.

## CONFIGURATION SITE

### DETECTION

#### Detector choice

Choose the type of detector you want to use. Then click on «**Activate**».

## WARNING

The detector will reboot to take this setting into account. You will temporarily lose the connection to the detector's Wi-Fi network.

### Detection settings

## WARNING

After changing a setting, click «**Save**» for the setting to take effect.

## Vigilance Level

This parameter determines the sensitivity of the detector.

*By default, the detector is set to a medium vigilance level (■■■).*

■■■■■ : High vigilance.

■ : Low vigilance.

## WARNING

The "Tests and Demos" profile is unusually sensitive and is not intended for use in operations.

## RECOMMENDATION

Height of detector above the ground (m)	Recommended vigilance level
2,0	■
2,25	■■
2,5	■■■
2,75	■■■■
3,0	■■■■■

## Lock activation time

Duration during which the detection is interrupted after an alarm (between 4s and 120s). *By default, the locking time is 30s for the PHOBOS.*

## Relay activation time

Duration of activation of the dry contact during an alarm (between 500ms and 5000ms). *By default, the relay activation time is 1500ms (1.5 seconds).*

## Test alarm

It is possible to generate a false alarm by clicking on the «**Send a test alarm**» button to test whether the detector's alarms are notified to the alarm control panel.

## CONNECTION

### Detector's name

Choose a name that allows you to identify the detector when you connect to it. This name is not related to the detector's Wi-Fi network name.

### Wi-Fi password

Change the connection password of the detector's Wi-Fi network here, click on «**Set password**», then reboot the detector.

To reset the password to default (**Qjafccnuas**), you have to open the detector's casing and press the **boot** button for at least 5 seconds with a thin rod (Fig. 2).



Tel. +33 (0)2 38 69 82 96  
contact@sensivic.com



USS SENSIVIC S.A.S.

Le Lab'O, 1 avenue du Champ de Mars,  
45074 ORLÉANS CEDEX 2 - France  
SIRET 81532197100021  
N° TVA FR48815321971  
Code NAF 4741Z

## Internet Connection

To connect the detector to the Internet, enter the name and password of an Internet access point here, click on «**Save Connection Options**», then reboot the detector.

If the detector is connected, the message «**You are connected to the network!**» appears on the left side of the window. Enable the «**Automatic connection**» switch so that the detector automatically reconnects to the access point after a reboot.

## MONITORING

### Sound characteristics

Sound pressure in milli-Pascal (mPa) and sound level in decibels (dB) measured by the detector.

### Operating data

Current detector settings and time since last power up (hours:minutes:seconds).

### Notified event counter

Counter of events notified (alarms) since the last powering up of the detector. To reset the counter to 0, click on the «**Reset to 0**» button.

## UPDATE

This page allows you to update the detector.

### Update

Click on «**Browse...**» and select the .bin file of the detector software supplied by SENSIVIC, then click on «**Update firmware**».

# PHOBOS

Panic scream detector

## Installation and configuration manual



## Previous version

If you wish to revert to the previous version of the detector software after an update, click «**Check the version**» and then, if a previous version of the software is found, click on the button «**Revert to Previous Version**».

## REBOOT THE DETECTOR

It is possible to reboot the detector by clicking on the button «**Reboot the detector**».

## TECHNICAL SPECIFICATIONS

### Power

Voltage: from 12 to 24 Vcc  
Power consumption: 1 W

### Environment

Temperature: from -40°C to +85°C  
Humidity: up to 95% without condensation

### Dimensions

80 mm x 65 mm x 40 mm  
Casing: white ABS IP40  
Weight: 100g

*These data are provided for information only. They are not contractual. USS SENSIVIC reserves the right to make any improvements that it deems useful to its products.*

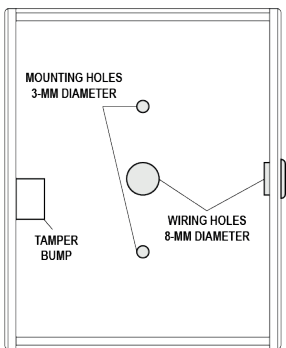


Fig. 1 : Mounting of the casing top cover